

Paper Reference 1GB0/01
Pearson Edexcel
Level 1/Level 2 GCSE (9–1)

Geography B
Paper 1: Global Geographical Issues

Tuesday 21 May 2019 – Afternoon

Diagram Book

In the boxes below, write your name, centre number and candidate number.

Surname					
Other names					
Centre Number					
Candidate Number					

INSTRUCTIONS

There may be spare copies of some diagrams in case you need them.

THIS DIAGRAM BOOK MUST BE RETURNED WITH THE QUESTION PAPER AT THE END OF THE EXAMINATION.

Contents

For some Figures there is a modified colour and modified black and white diagram. You may use whichever version is easier for you to view. Some diagrams are only in modified colour but you are then provided with a description of the diagram.

Page

SECTION A

- 5 Figure 1
- 6 Figure 2
- 7 Figure 3 – Colour
- 8 Figure 3 – Black and White
- 9 Figure 4 – Colour
- 10 Figure 4 – Black and White

SECTION B

- 11 Figure 5 – Colour
- 12 Figure 5 – Black and White
- 13 Figure 6a – Colour
- 14 Figure 6a – Black and White
- 15 Figure 6b – Colour
- 16 Figure 6b – Black and White

SECTION C

- 17 Figure 7 – Colour

(continued on the next page)

Contents continued.

Page

18	Figure 7 – Colour (Spare copy)
19	Figure 7 – Black and White
20	Figure 7 – Black and White (Spare copy)
21	Figure 8a – Colour
22	Figure 8a – Black and White
23	Figure 8b – Colour
24	Figure 8b – Black and White
25	Figure 9

Figure 1

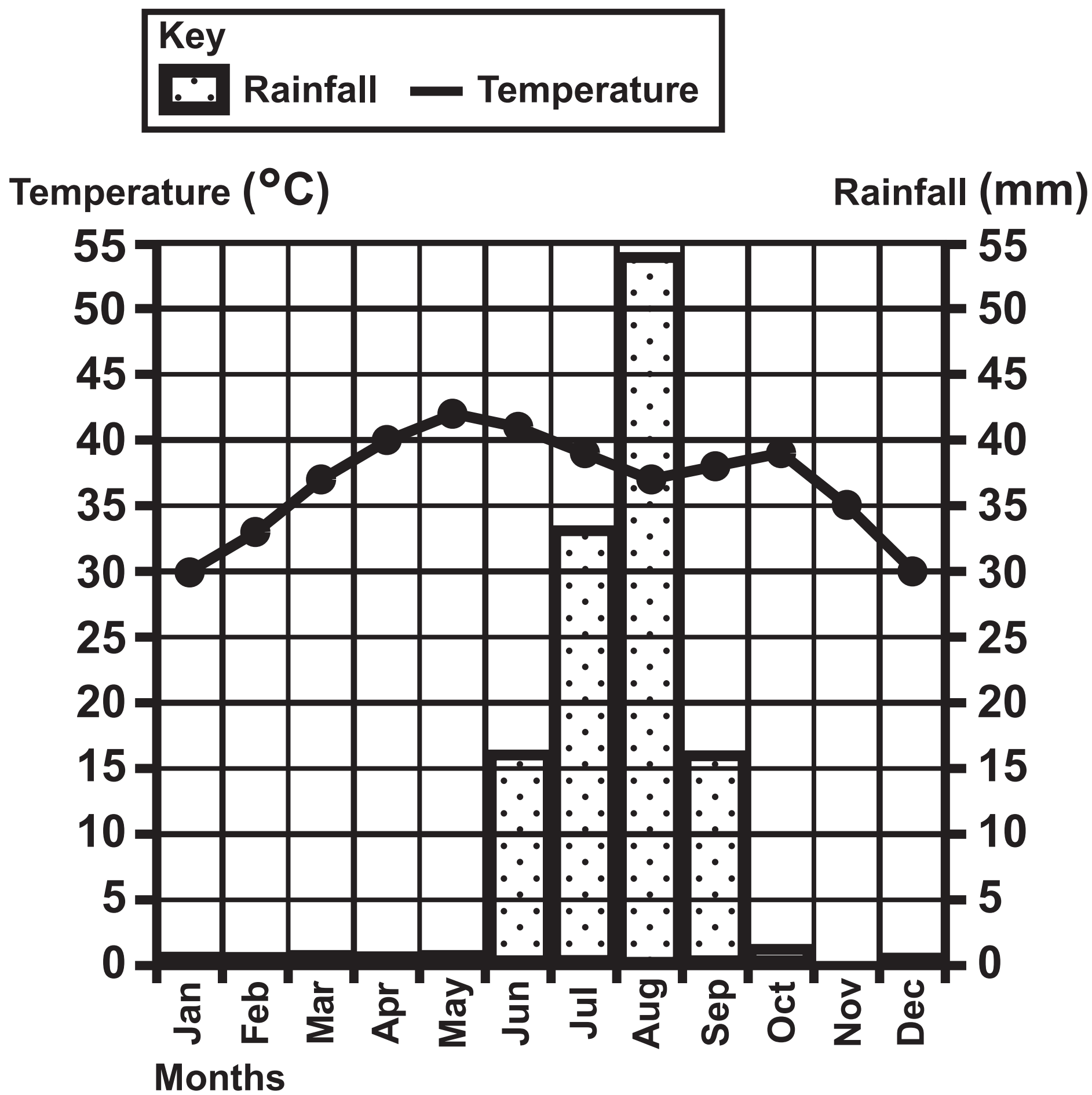


Figure 2

Selected data for two tropical cyclones

Name of tropical cyclone	Location and date	Economic cost (US\$ billions)	Number of deaths
Hurricane Katrina	Caribbean / USA August 2005	108	1,800
Typhoon Haiyan	South East Asia November 2013	3	7,200

Figure 3 – Colour

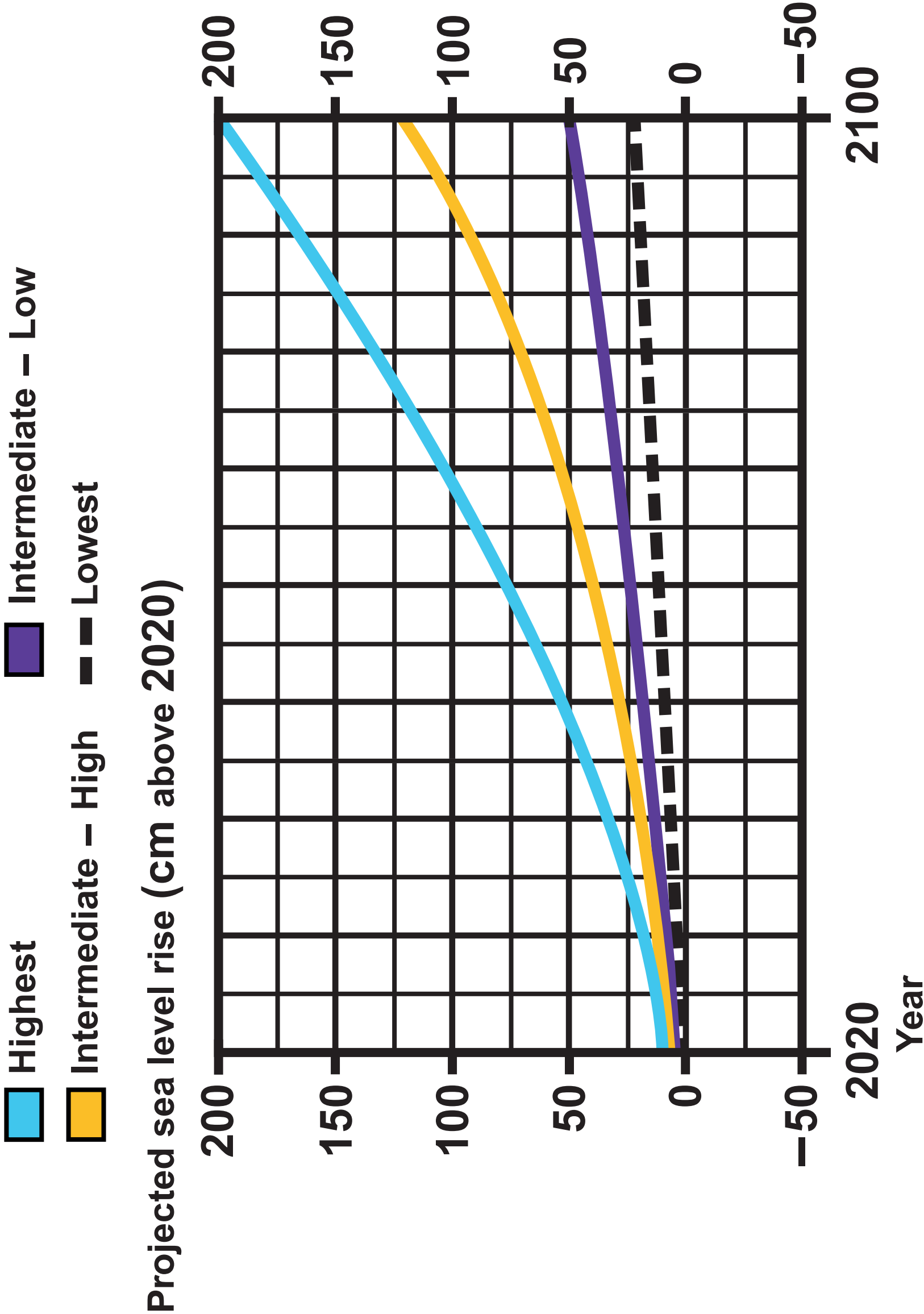


Figure 3 – Black and White

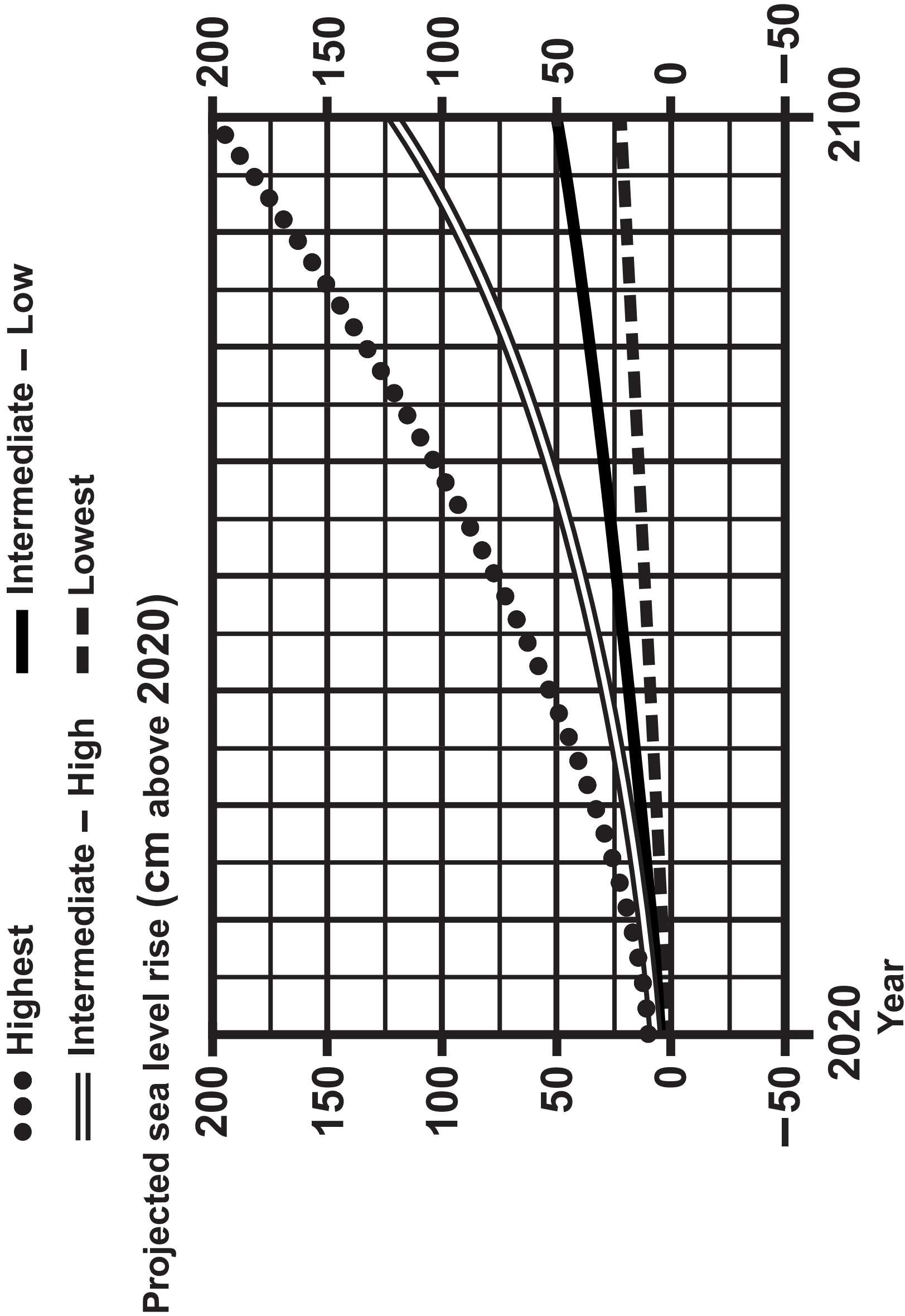


Figure 4 – Colour

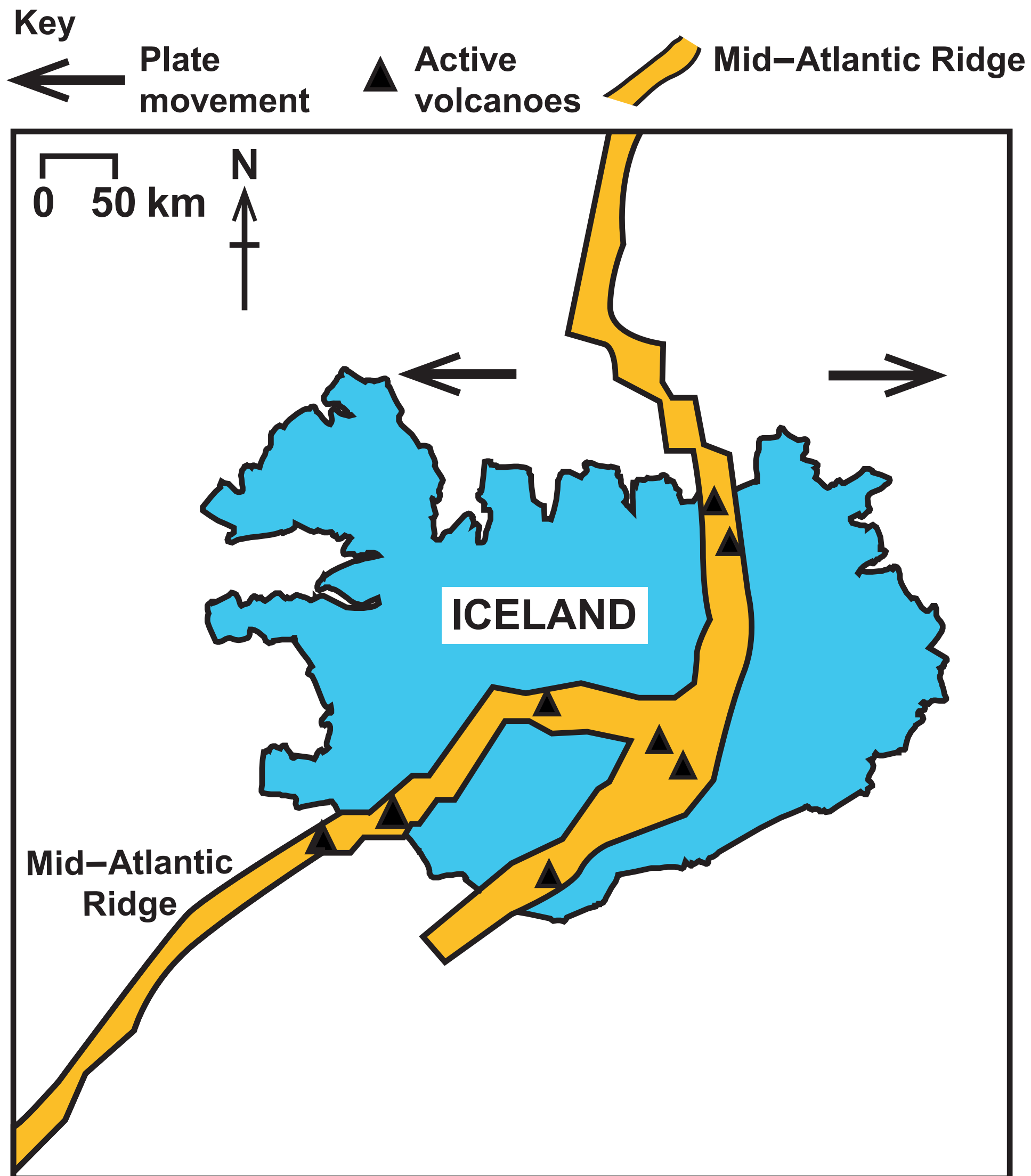


Figure 4 – Black and White

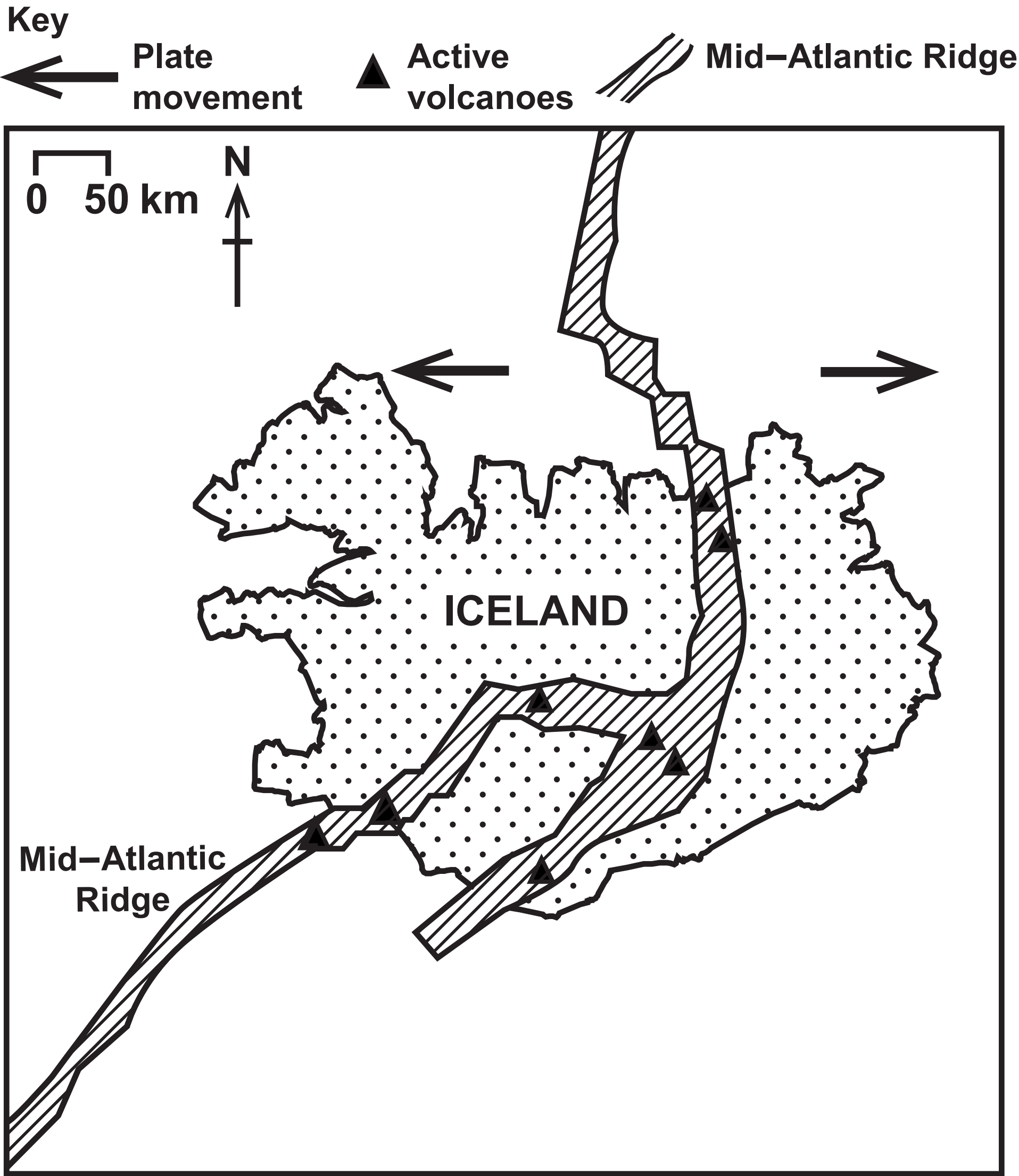


Figure 5 – Colour

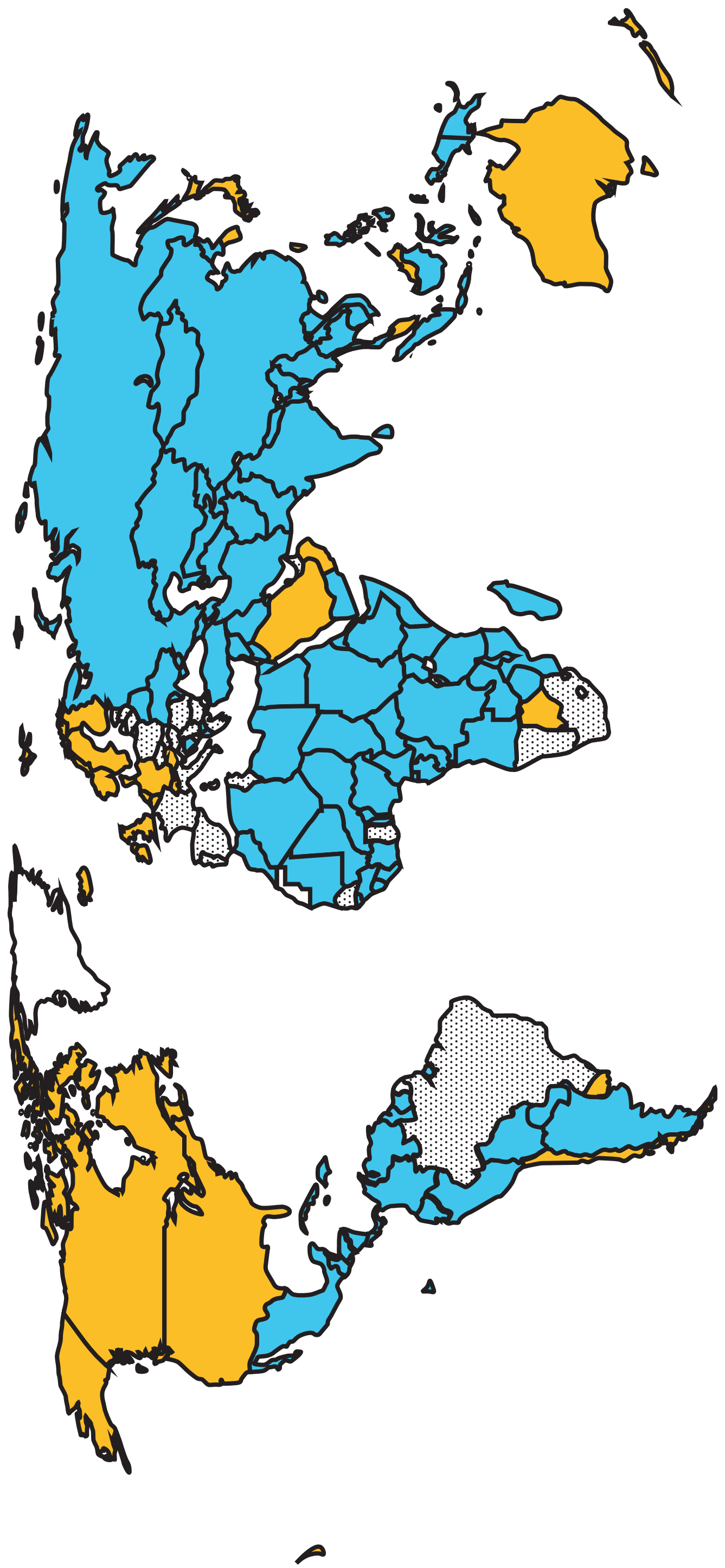
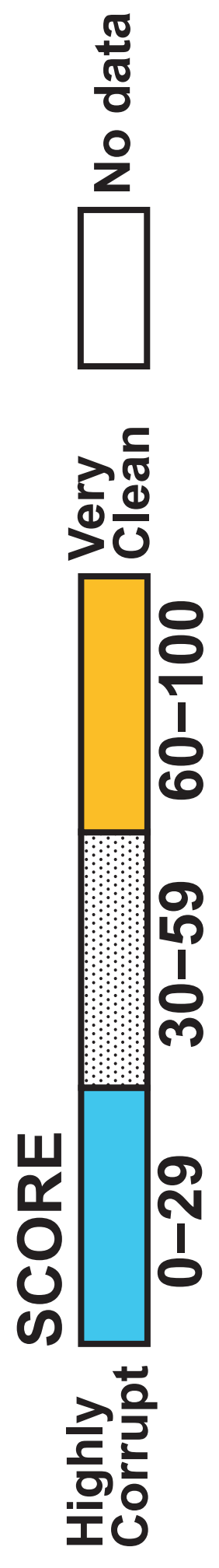


Figure 6a – Colour

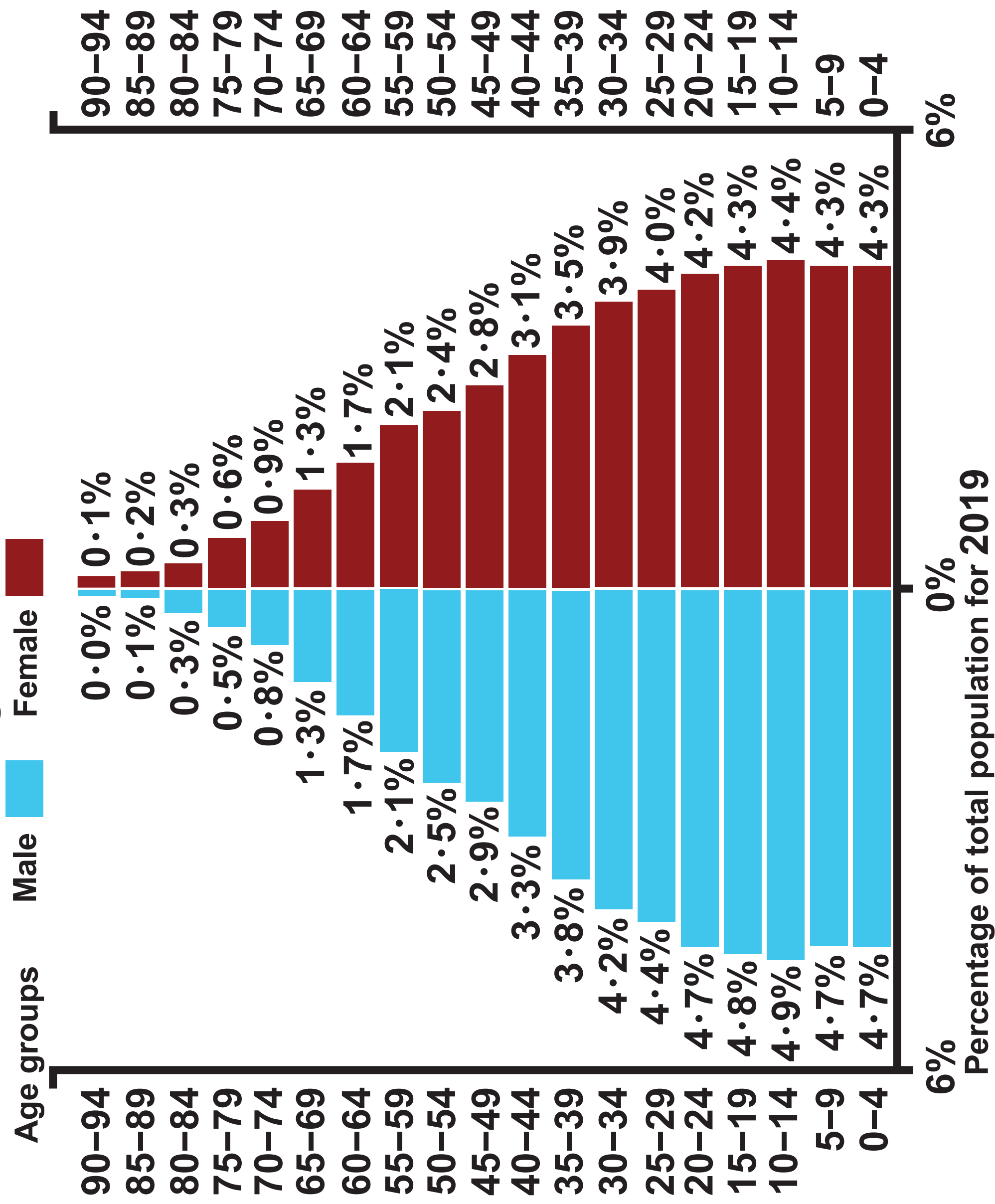


Figure 6a – Black and White

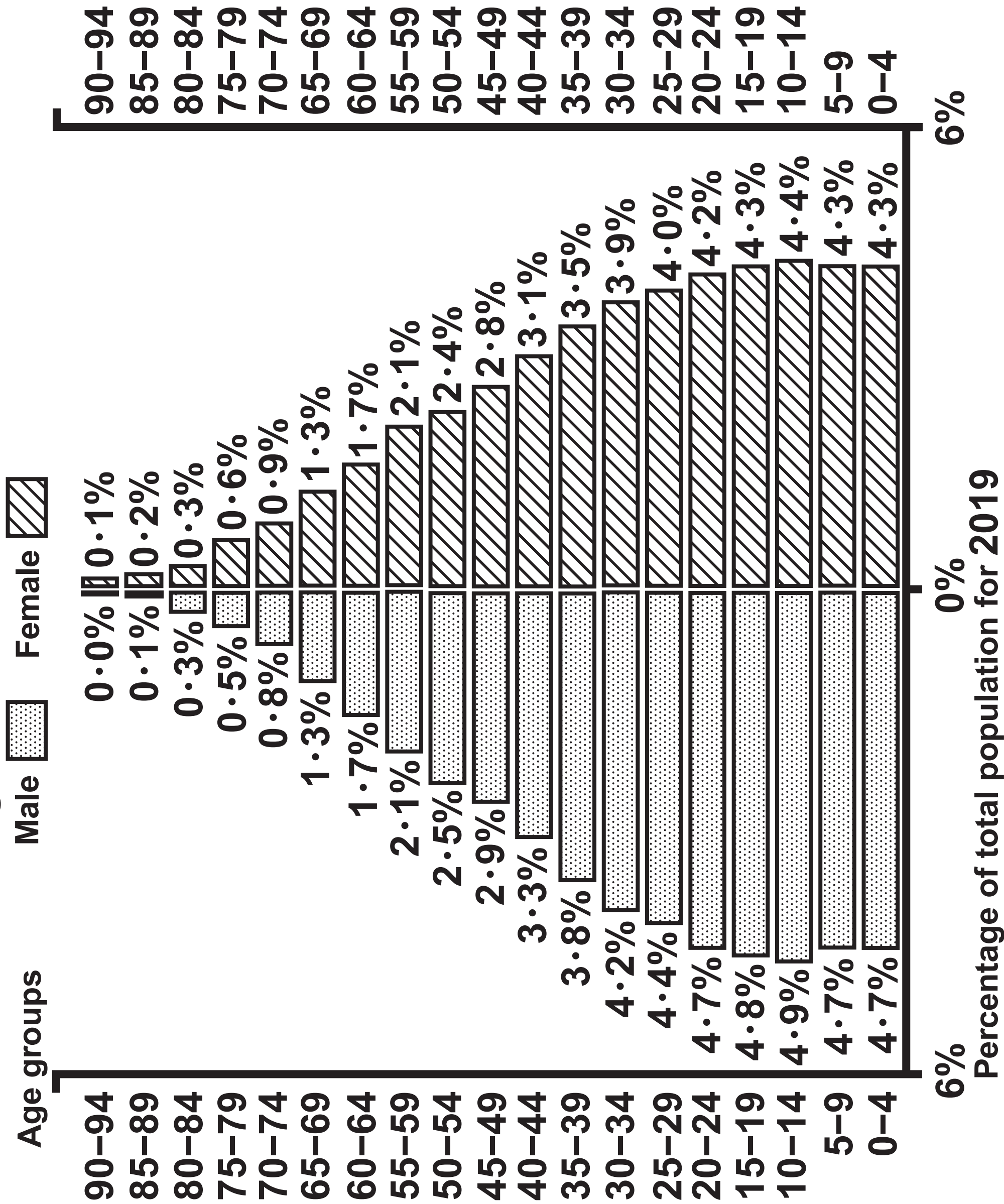


Figure 6b – Colour

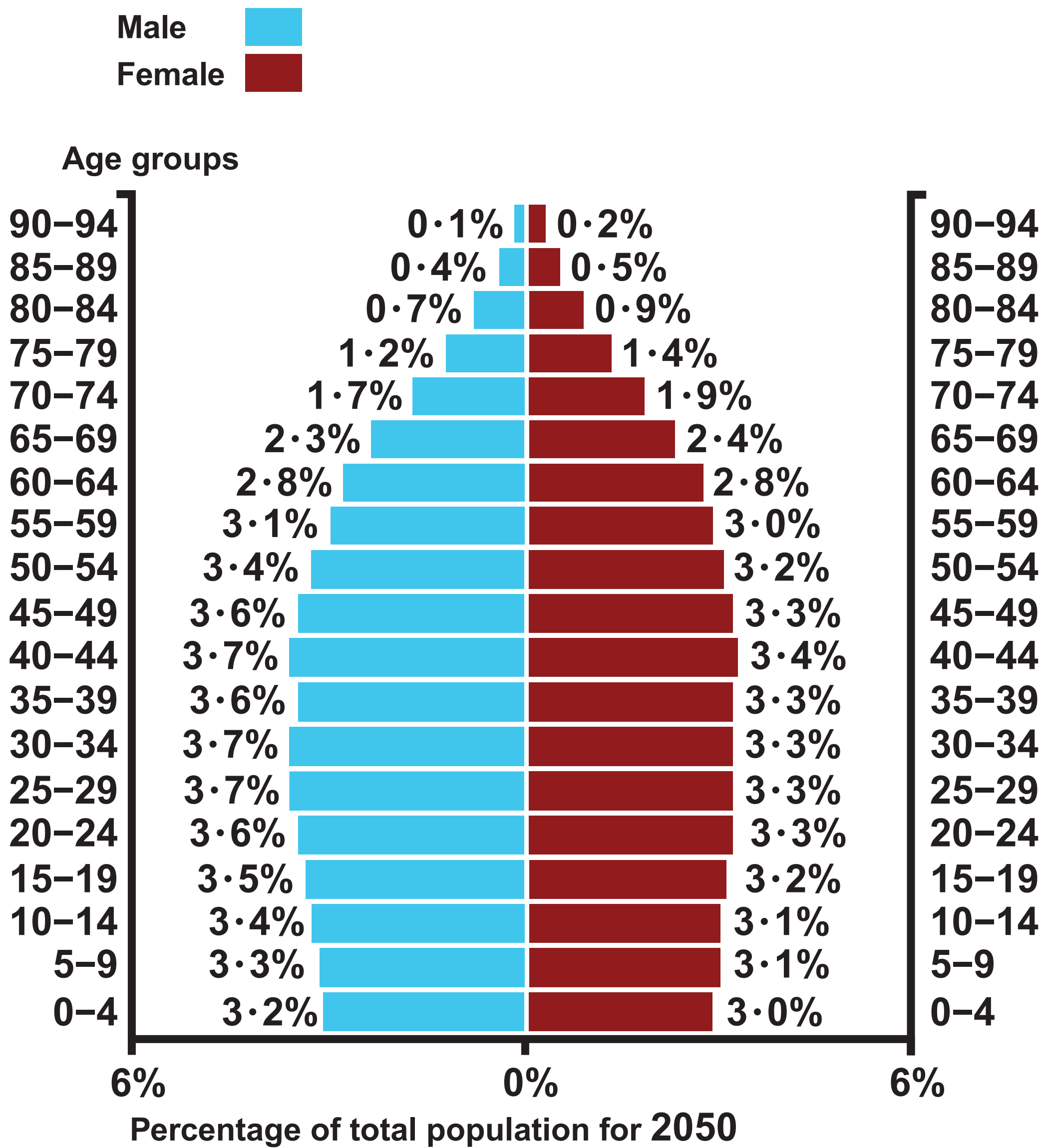


Figure 6b – Black and White

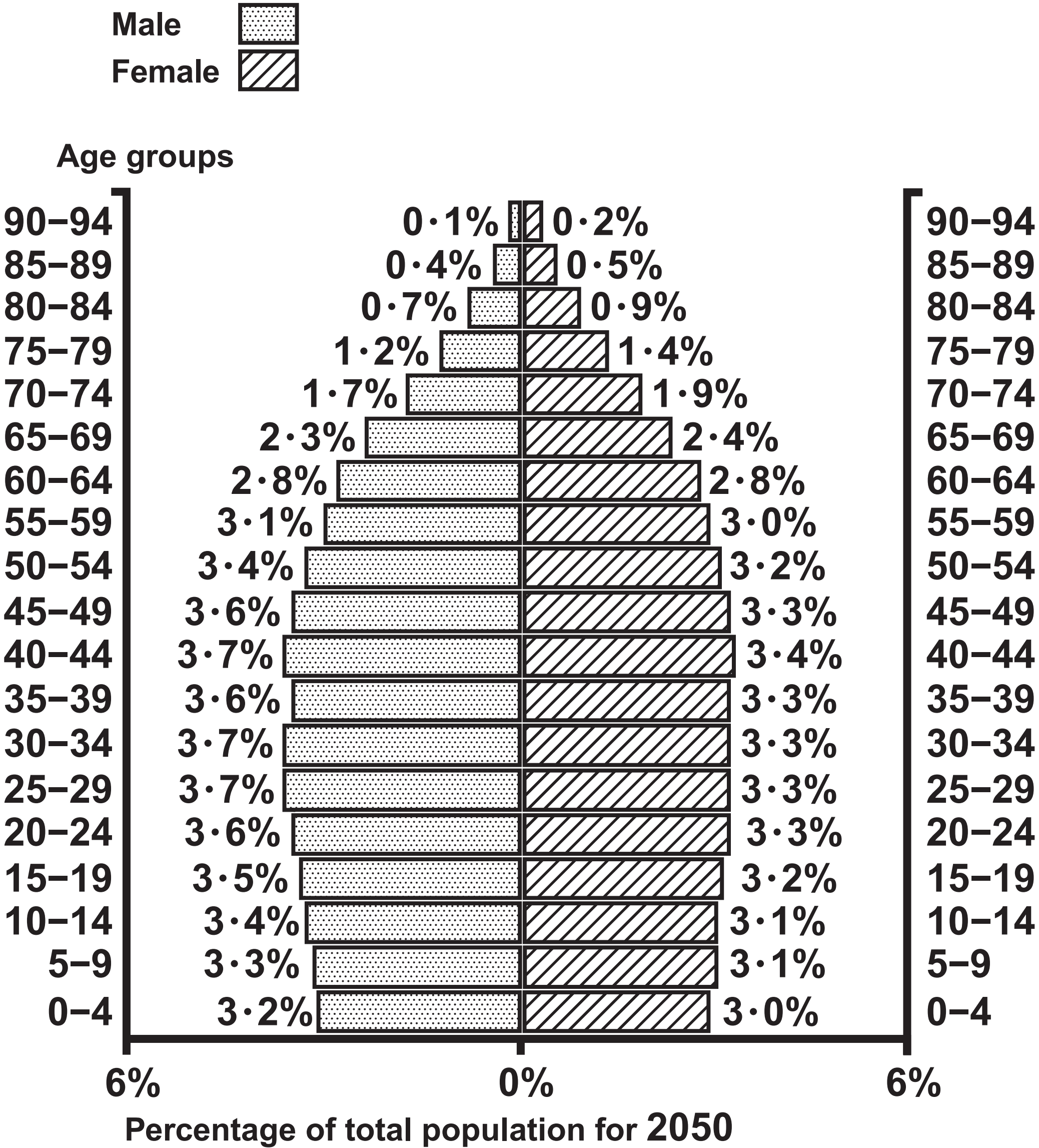


Figure 7 – Colour



% Urban population

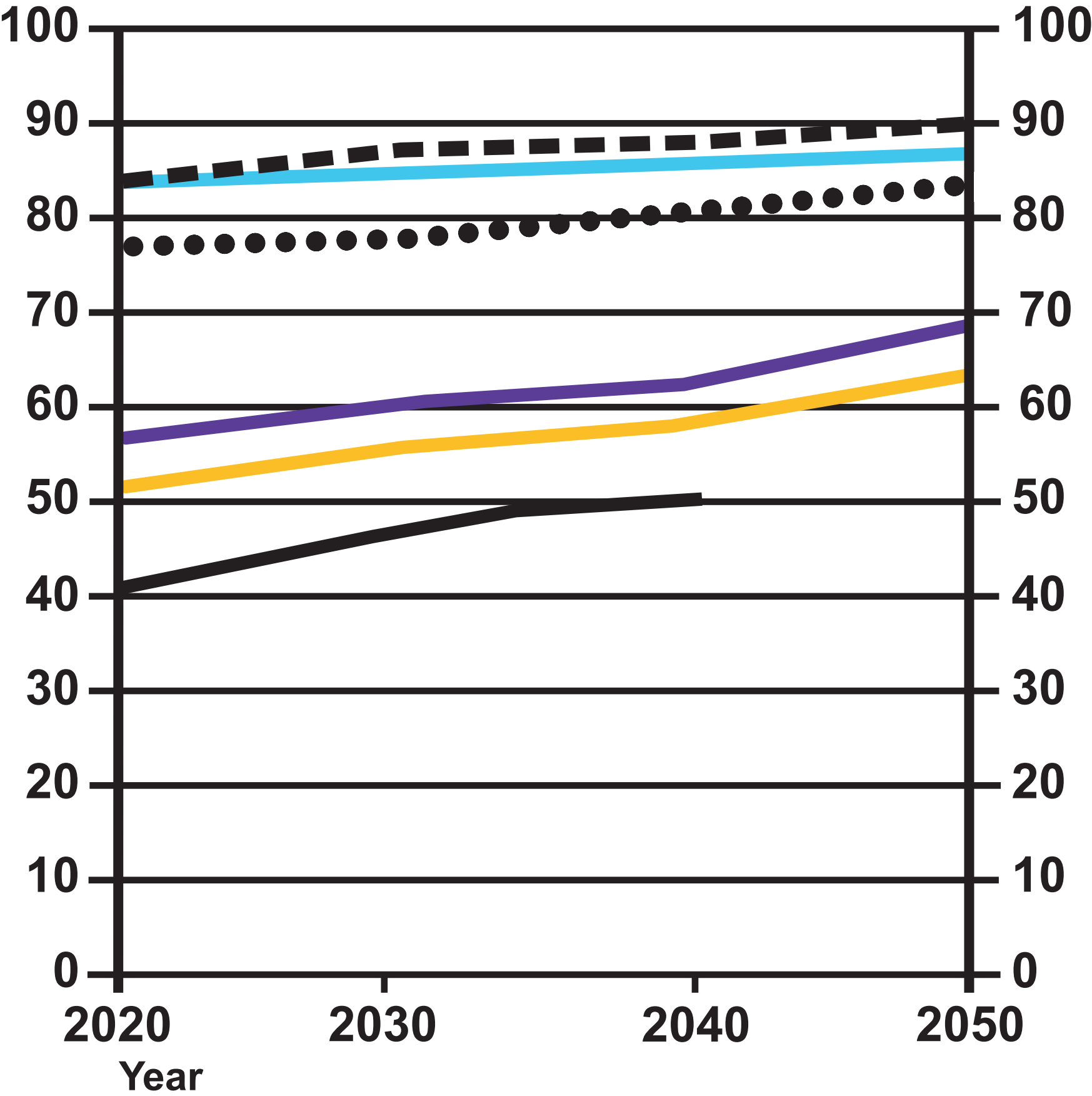


Figure 7 – Colour



% Urban population

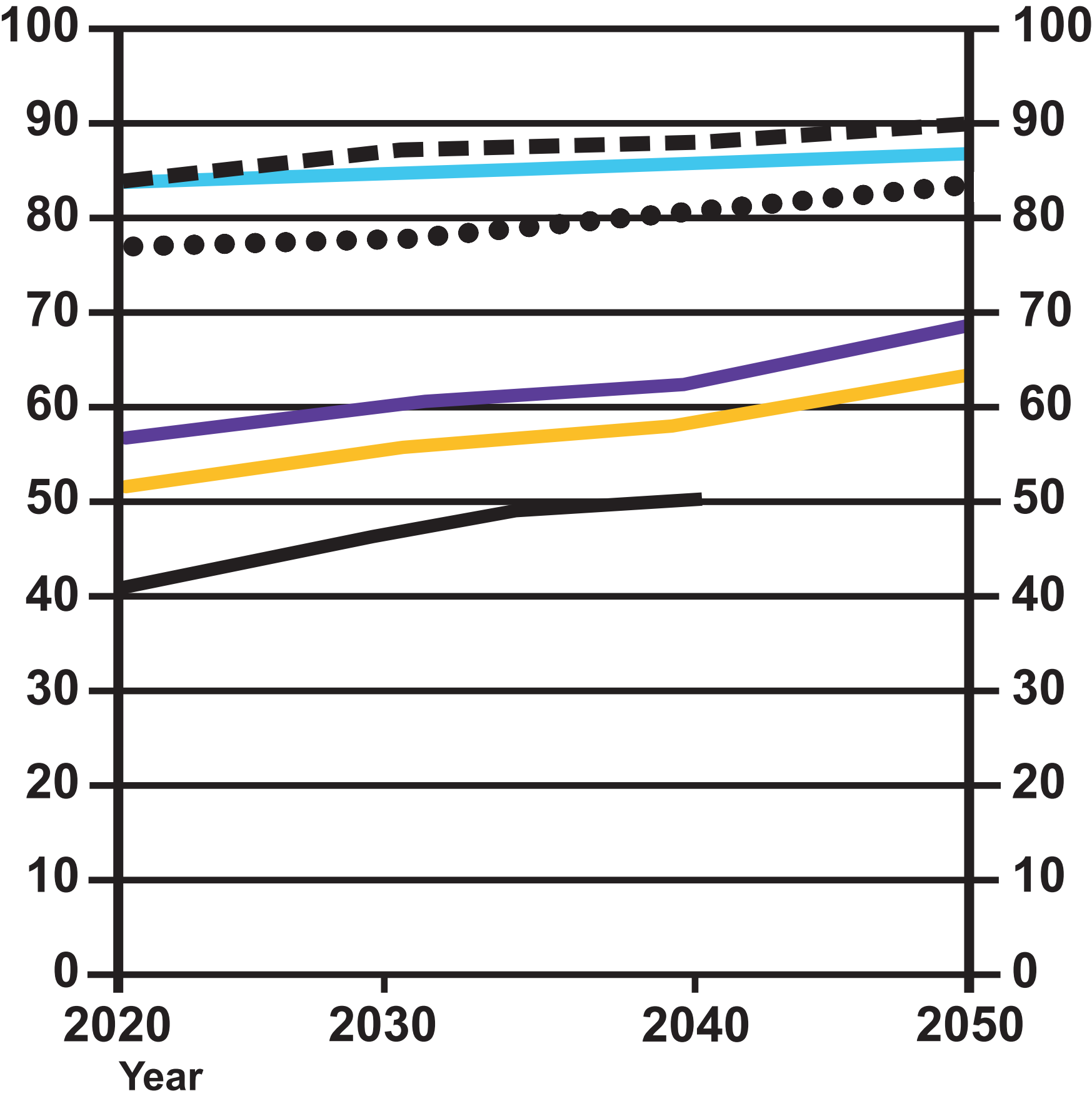


Figure 7 – Black and White



% Urban population

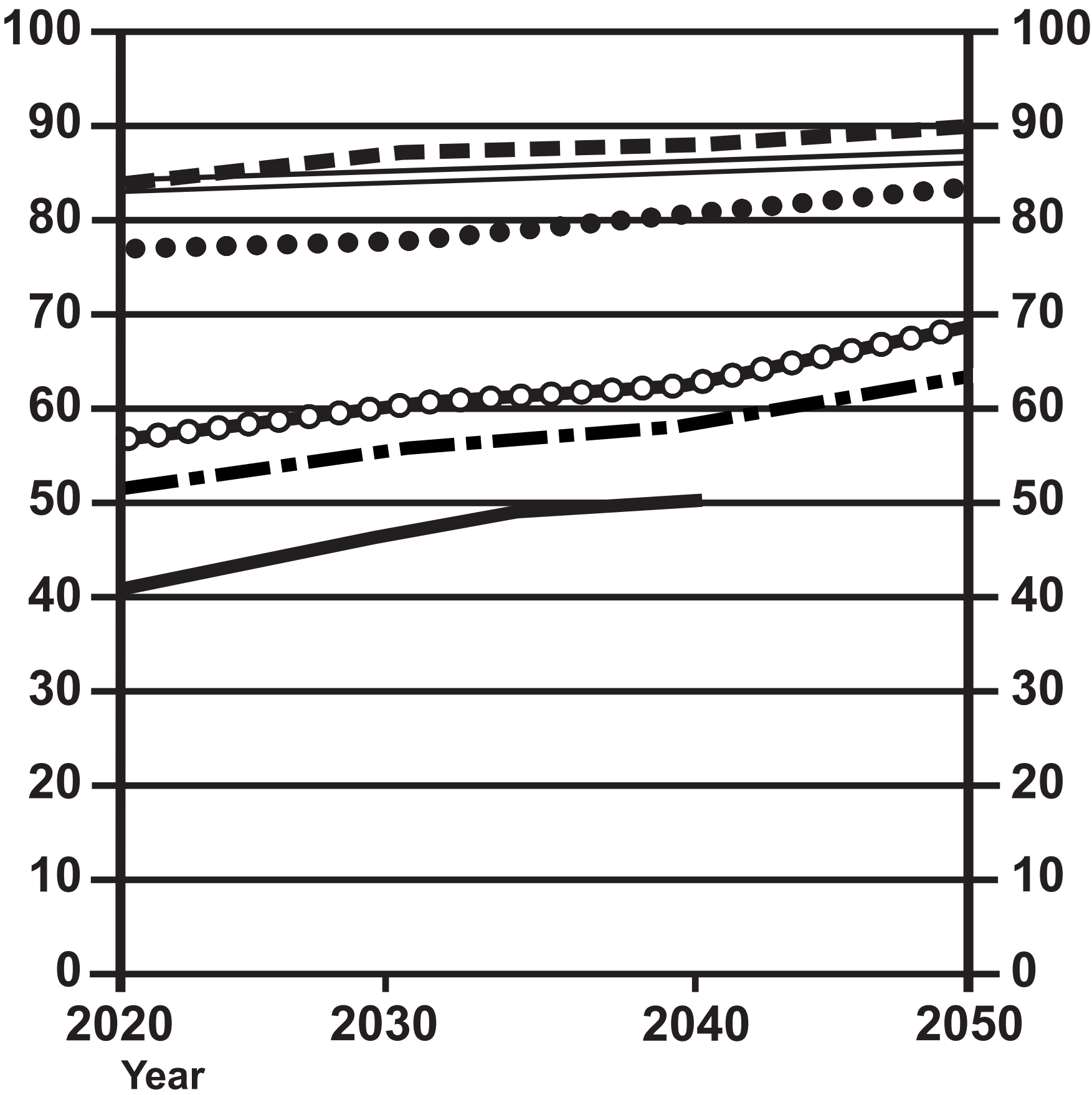


Figure 7 – Black and White



% Urban population

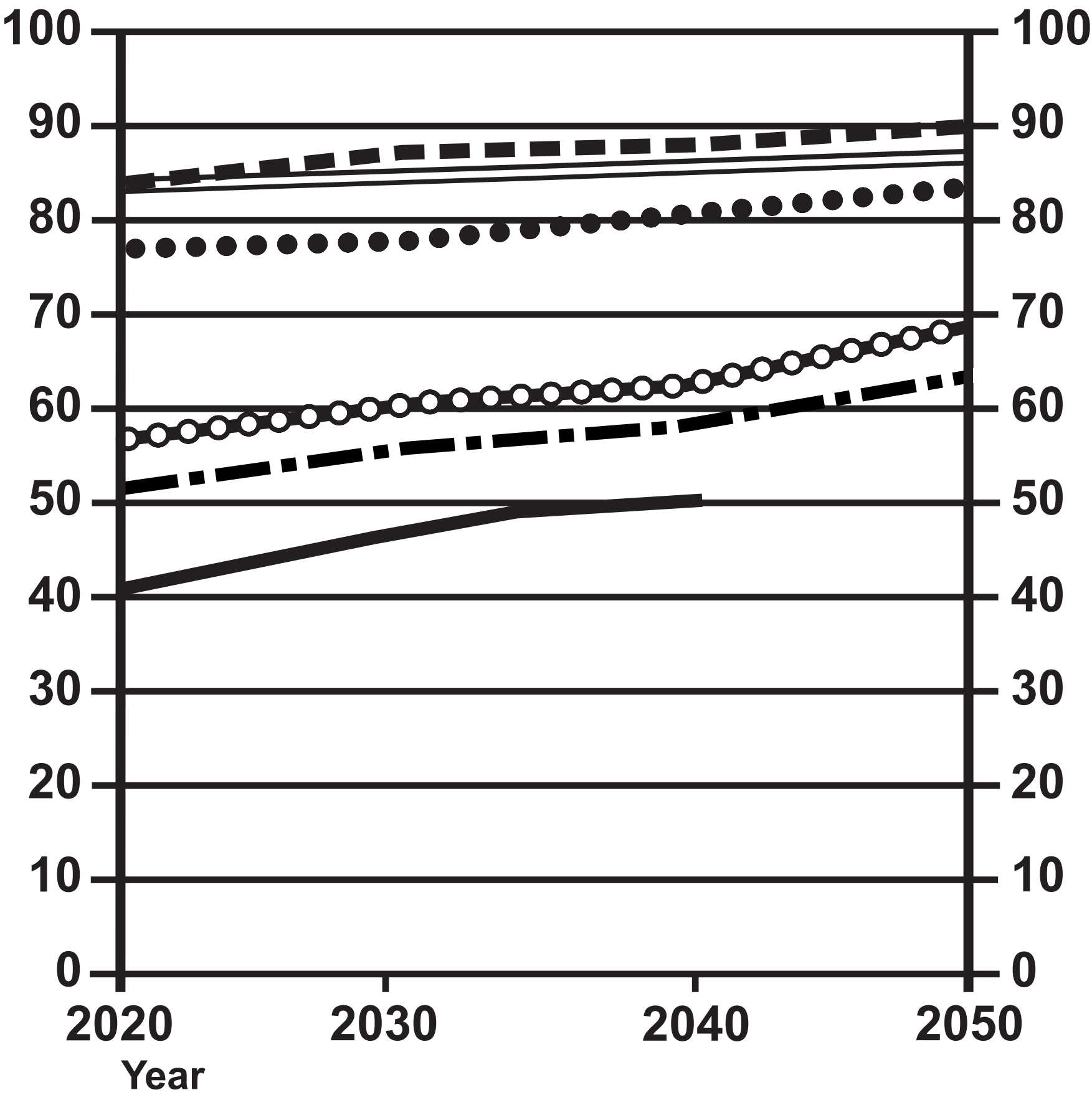


Figure 8a – Colour

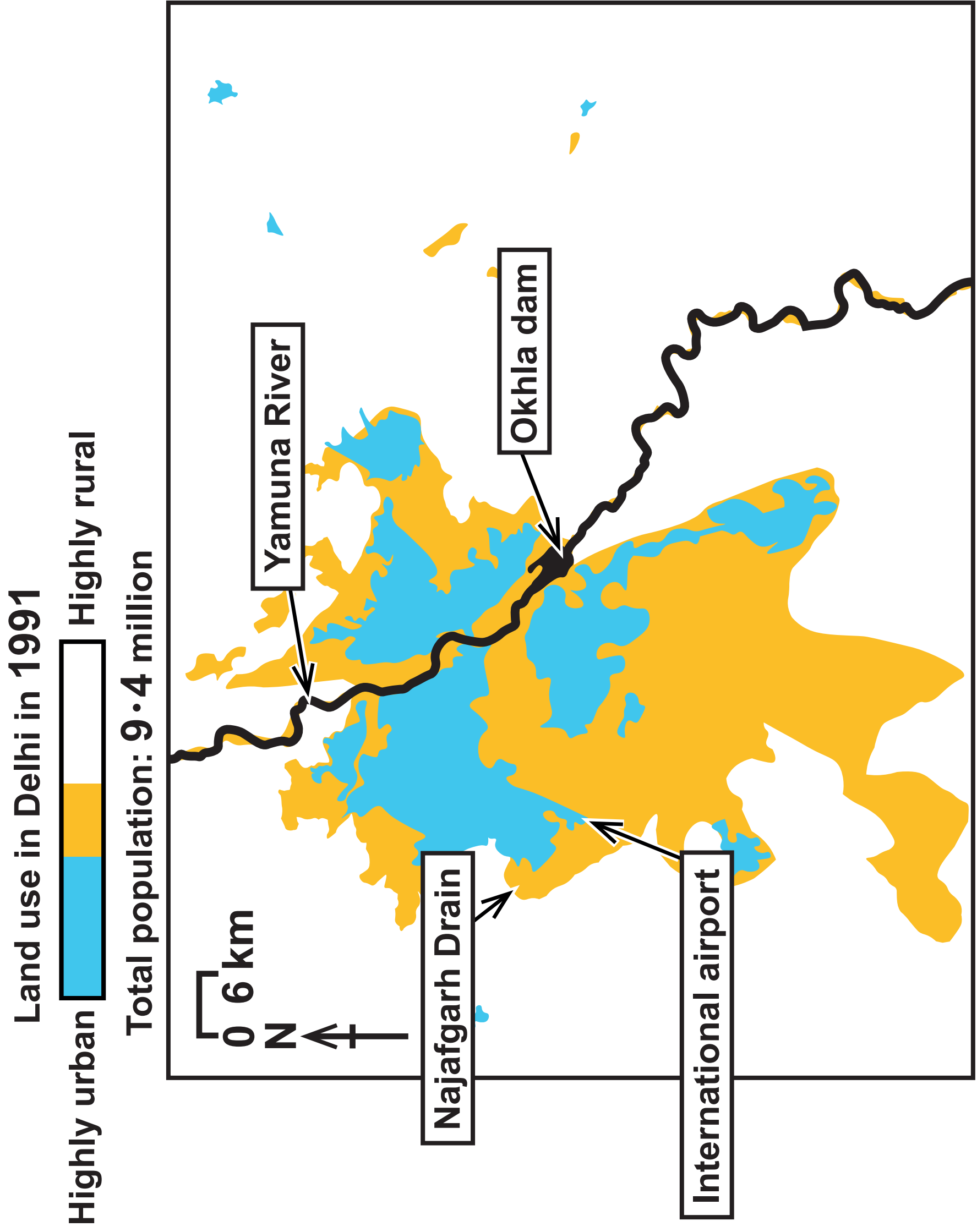


Figure 8a – Black and White

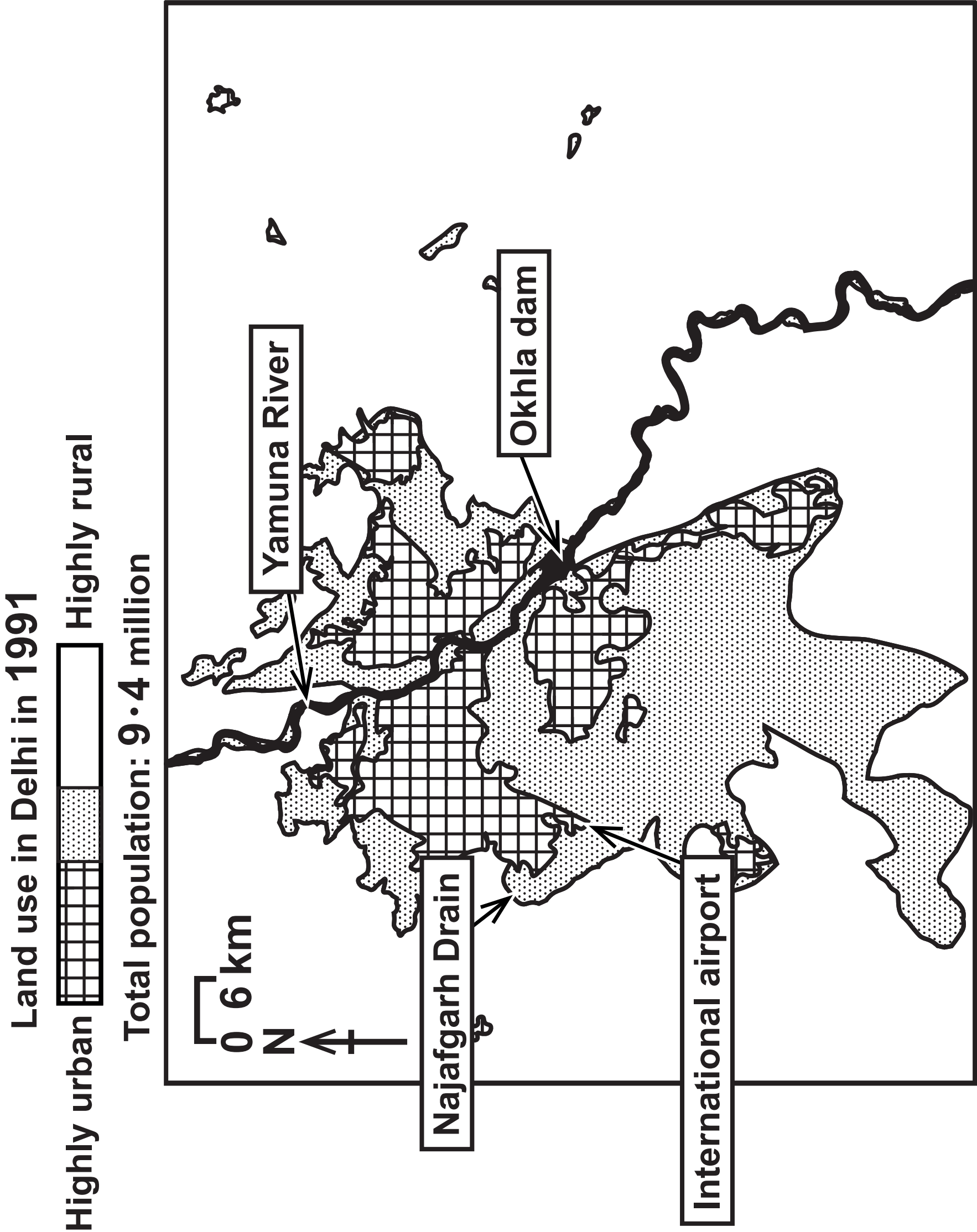


Figure 8b – Colour

Key facts about Delhi (2016)

- Total population: **19.1 million**
- In **2016** Delhi was declared the city with the world's worst air pollution.
- **52%** of Delhi's population live in slums.
- Delhi produces **9,000 tonnes** of solid waste per day.

Land use in Delhi in 2016

Highly urban  Highly rural

Total population: **19.1 million**

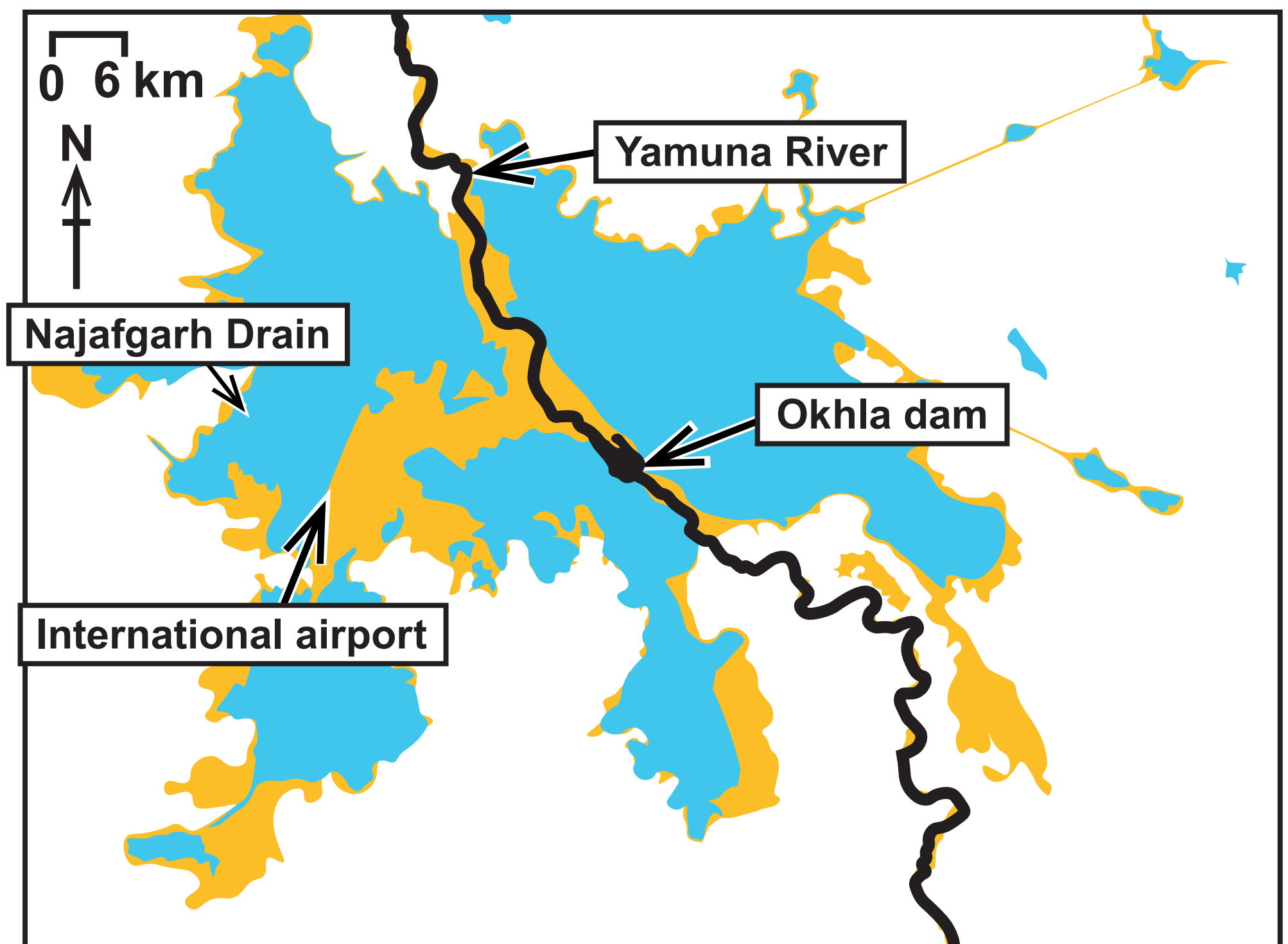



Figure 8b – Black and White

Key facts about Delhi (2016)

- Total population: 19.1 million
- In 2016 Delhi was declared the city with the world's worst air pollution.
- 52% of Delhi's population live in slums.
- Delhi produces 9,000 tonnes of solid waste per day.

Land use in Delhi in 2016

Highly urban  Highly rural

Total population: 19.1 million

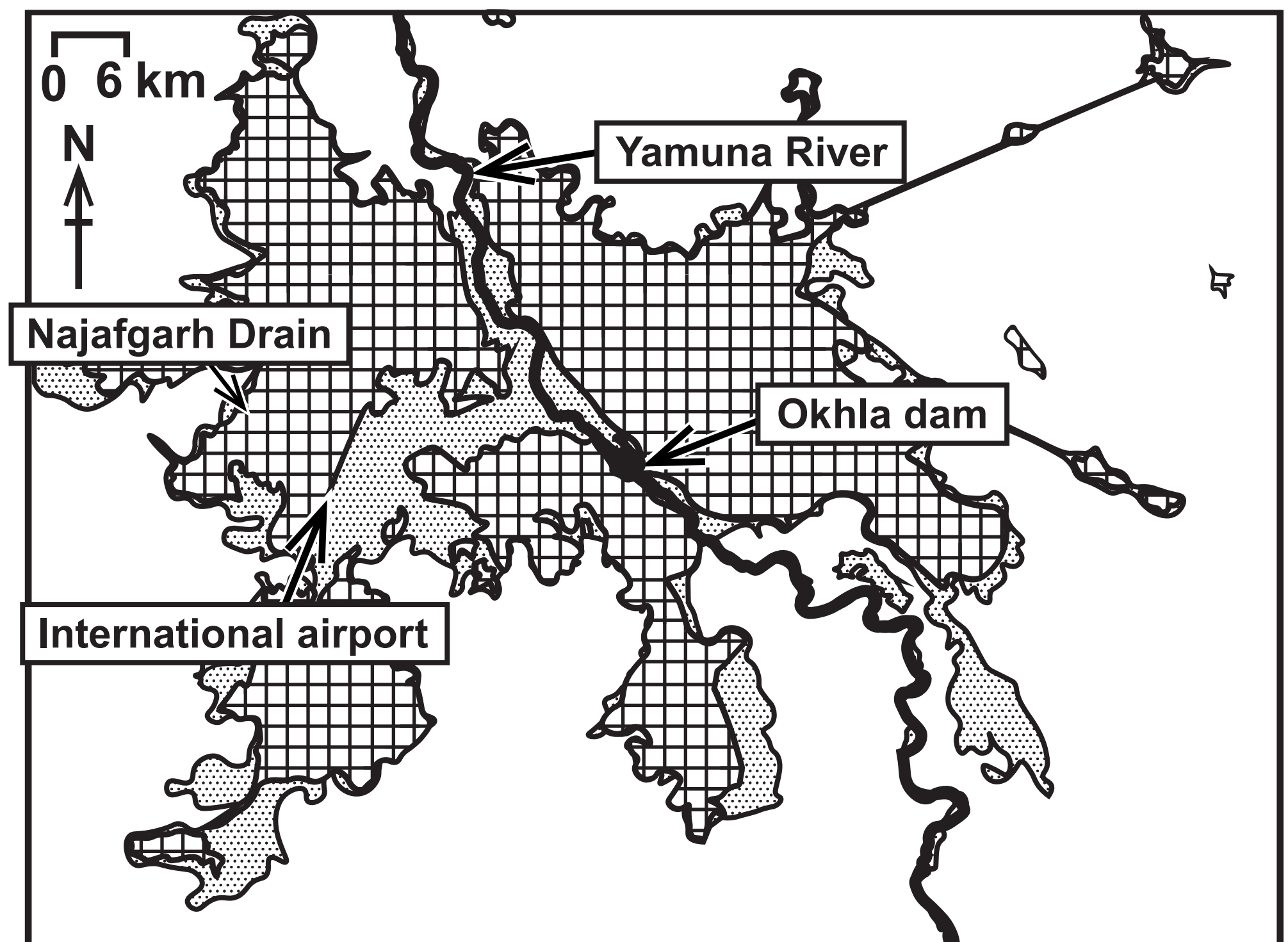


Figure 9

